

SmartWorks Pro: Importing Profiles from CopySmart

Windows 7 and Vista

Ensure the printer drivers you want to use with SmartWorks Pro have been installed on your SmartWorks Pro PC.

Copy the .ICM and .LIN file pairs from the CopySmart installation for each printer/media profile found in the FROM LOCATION into the SmartWorks Pro file structure at the TO LOCATION.

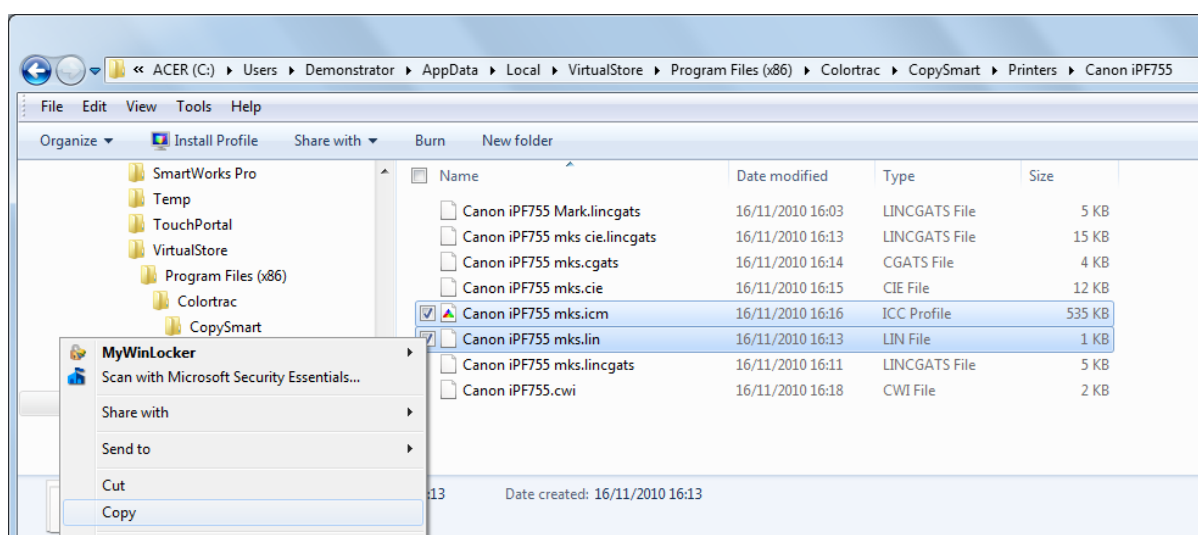
- Canon iPF755 mks.icm
- Canon iPF755 mks.lin

FROM LOCATION:

C:\Users\PC name\AppData\Local\VirtualStore\Program Files (x86)\Colortrac\CopySmart\Printers

In this example

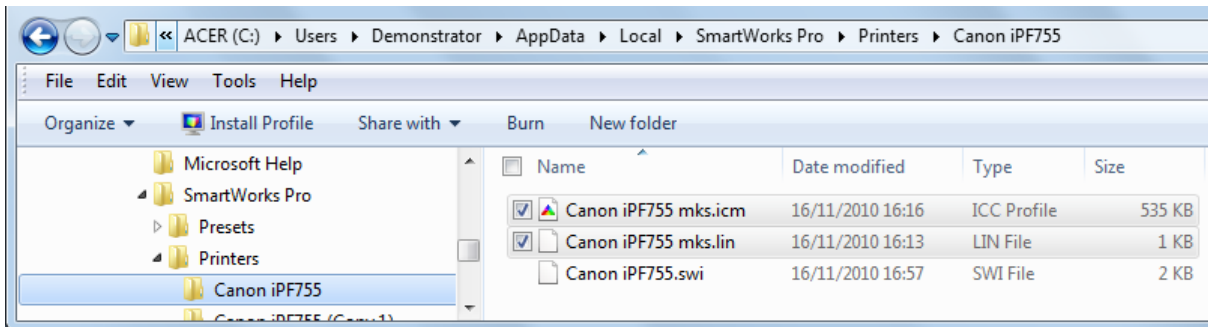
- Printer = Canon iPF755
- Media = "mks"
- CopySmart computer called "Demonstrator" = "PC name"



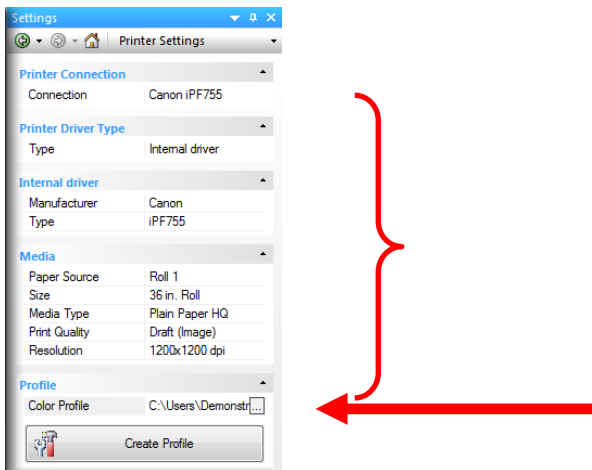
Paste these files **into** the following location for SmartWorks Pro

TO LOCATION:

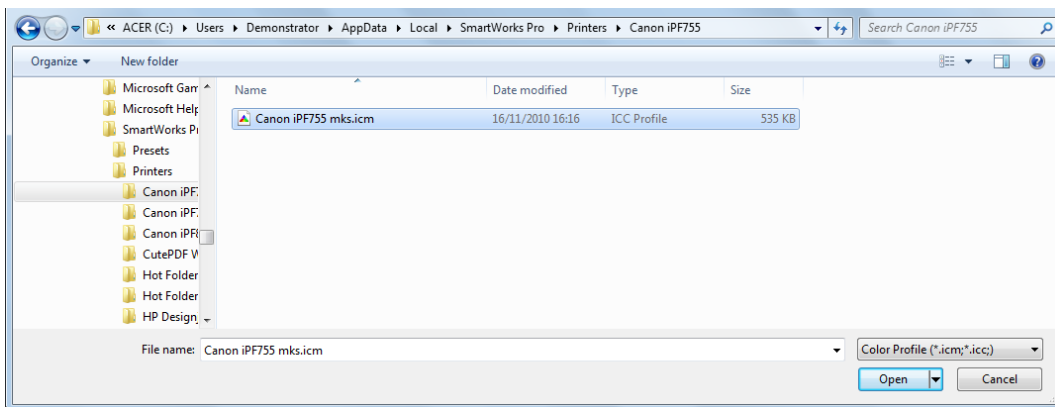
C:\Users\PC name\AppData\Local\SmartWorks Pro\Printers



In SmartWorks Pro, configure the Printer Settings to match the correct settings for the profile.



Browse and select the profile you just copied.



Windows XP

CopySmart profiles are found in:

C:\Documents and Settings\All Users\Application Data\Colortrac\ CopySmart\Printers

SmartWorks Pro profiles are found in:

C:\Documents and Settings\All Users\Application Data\Colortrac\ SmartWorks Pro\Printers

END