

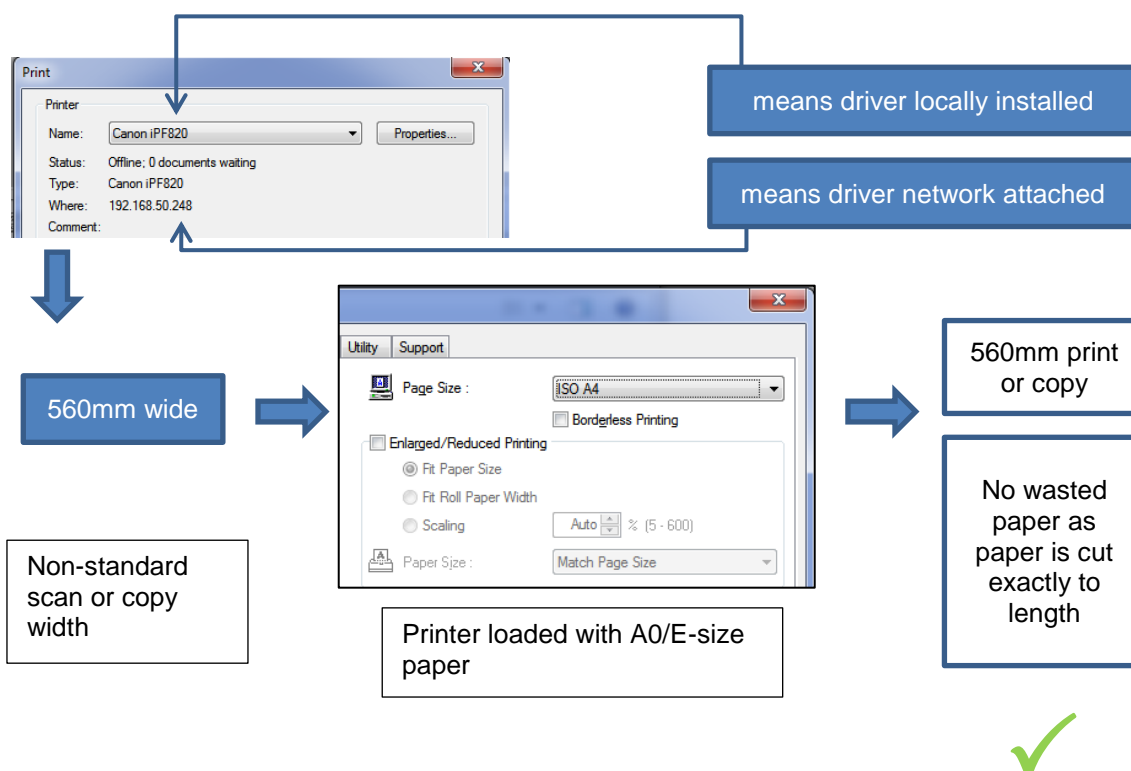
CAN 17	Colortrac Ltd	Page 1 of 1
Rev1.0	Setting the Correct Paper Size with Windows Printer Drivers	Date: 2012-07-26
This document intended to supplement the installation and operation manual or training and instruction sessions provided by Colortrac and its partners		

THE DIFFERENCES BETWEEN LOCAL AND NETWORKED INSTALLED PRINTERS ON THE FUNCTION OF THE WINDOWS PRINTER DRIVER PAPER SIZE PARAMETER

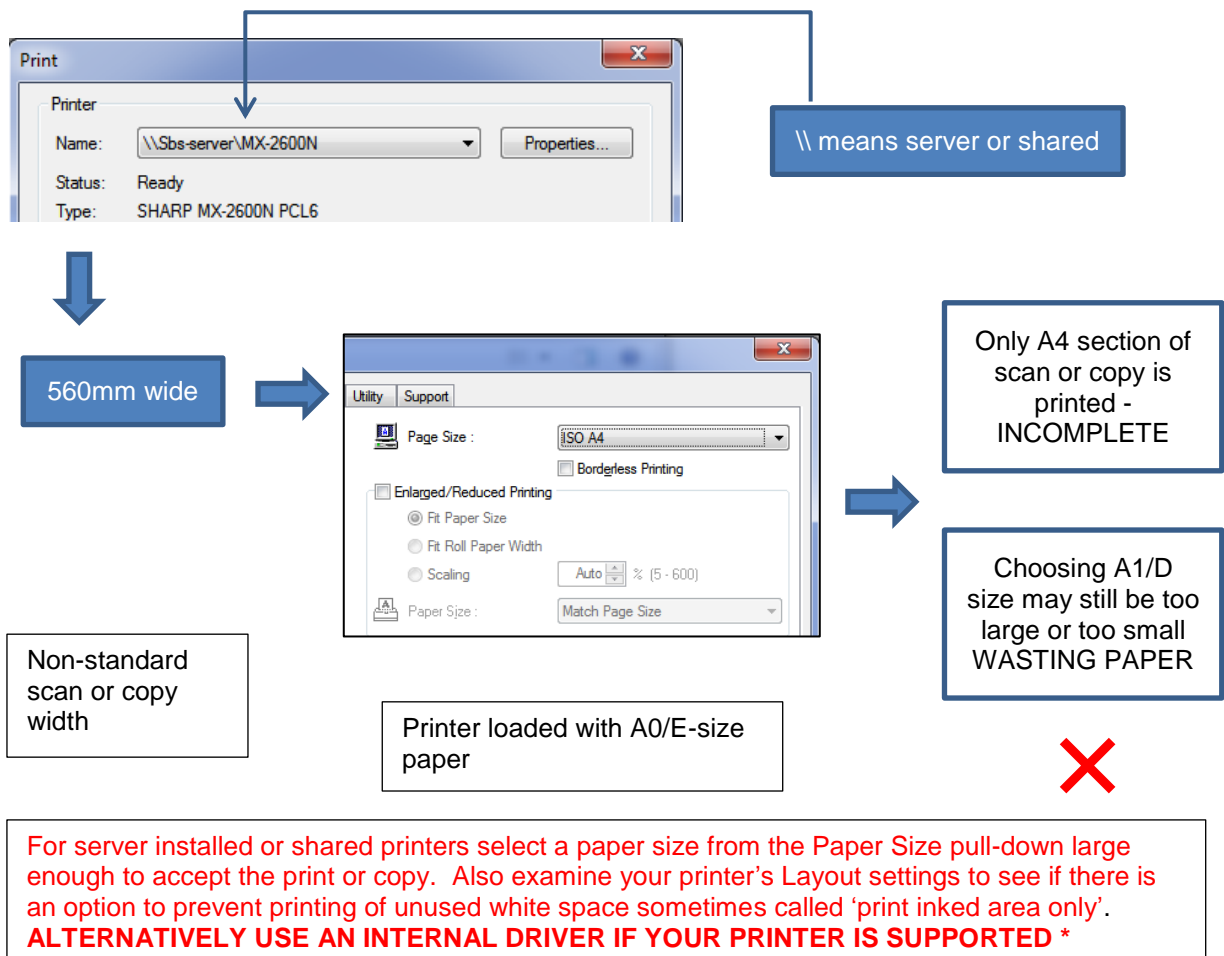
LARGE FORMAT PRINTERS

The Colortrac Windows Printer Driver system used in SmartWorks EZ, SmartWorks EZ Touch and SmartWorks Pro will automatically set the paper at the target printer to match the incoming scan or print for certain types of Windows driver installation. The automatic paper size value sent by the Colortrac software is not displayed in the print driver properties Paper Size box and this will still show the default paper size of A4/A.

1. The automatic Colortrac feature works for printer drivers installed locally and connected to a printer on the same computer (USB) or a printer on a connected network.



- The automatic Colortrac feature does not work for printer drivers installed away from the scanner workstation for example in the case of shared printers or server attached printers.



SMALL FORMAT PRINTERS

Some small format printer drivers do not allow the printed image to be reduced in size in order to accept a copy or print from a larger device whether they are locally or remotely installed. Where the driver does allow print size fitting or reduction of the incoming image the printer must be installed as in case 1 above i.e. installed locally and connected to a printer on the same computer (USB) or a printer on a connected network.

RELATED ISSUES

SmartWorks Pro users can sometimes be puzzled why a network printer may not appear in the Windows printer driver pull-down list. This is because SmartWorks Pro must have the full local installation of the driver installed in all cases whether the intention is to use the Windows printer driver or the Colortrac internal driver to connect to the printer. The internal driver uses the connection information part of the Windows driver and for Windows driver printing and copying the locally installed driver components are essential in providing the enhanced control over the Windows printer. SmartWorks Pro will not work with shared or server installed network printers. To work with a printer reachable on a network simply install the printer's driver locally then add its port address and select it. SmartWorks Pro will then work correctly using the internal or the Windows driver method.

*SmartWorks Pro users only