

CAN 23	Colortrac Ltd	Page 1 of 1
Rev1.0	<b>CAN23-Twain for SC Series Scanners</b>	Date: 2013-10-21
This document intended to supplement the installation and operation manual or training and instruction sessions provided by Colortrac and its partners		

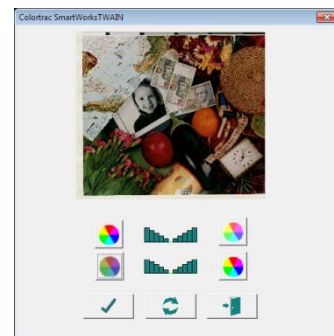
## CAN23-Twain for SC Series Scanners



### Limitations of Colortrac Twain

The new v0.9 Twain driver from Colortrac is available for the SmartLF SC scanner range only. TWAIN provides a simple way to control an SC scanner from within a compatible mass-market product or a bespoke application written to function at the v1.5 level of the Twain specification. Applications that have tested compatible so far with SC Twain are:

- Adobe Acrobat
- Microsoft Publisher
- IrfanView
- PaperScan Free
- CODEproject



SC TWAIN allows the user to control scan resolution, scan area (paper size), colour mode (RGB, B&W or grayscale), the speed of the scanner and the type of measurement units displayed on the interface. Adjustments to the brightness and contrast of the acquired scan can be viewed and applied via the second screen.

Colortrac SC Twain relies on the functionality of the host application to control editing aspects such as cropping, rotation, sharpening etc. printing and for saving to file in any of the common raster formats like JPEG, PNG and TIFF.

### Installation

The TWAIN driver is integral to version of SC Utilities v1.0.2.6 and later and can be downloaded at <http://www.colortrac.com/support/software-downloads>. The SC TWAIN driver installs as a plug-in module and will automatically be recognised by compatible applications. The usual method of starting the Twain driver is to first select the SC Twain device then activate it through the acquire option accessed from the host application's File pull-down menu.

The full specification for SC Twain is available from <http://www.colortrac.com/software/sc-twain-driver/>