

What is Crop Copy and why is it needed?

Crop copy allows size for size copying without the need to fit or scale to the printer paper size. This function (v1440 onwards) allows the operator to control unwanted movement of the printed copy across the target paper during the copying process. It achieves this by automatically removing unimportant margin information in the scan before it is sent to the printer driver. The function can be turned on or off as required and works for all types of printer driver. It does not change the scan file.

Technical

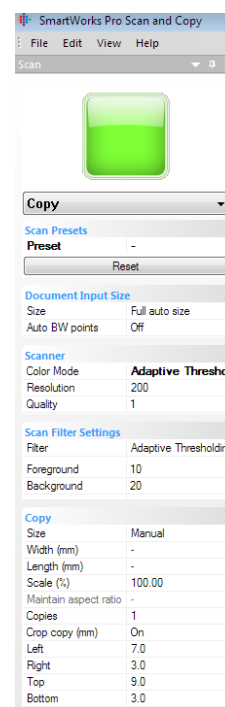
If information on the original printed document is very close to the physical paper edges copying can sometimes cause the data along the edges of the copy to be lost unless the copy printer is loaded with wider paper than the original printer. The problem occurs because unless a printer is working in full-bleed mode it will always move the start of the print a small distance away from the physical corner of the document to protect against head damage (paper edge curl). When a copy is made of a printed original the printer will offset the data once more. The cumulative effect offsets the copied image to the other side of the printer paper. If the data was already close to the edge in the original the edge data may get lost in the copy.

Users of Autosize may see the problem of copy movement more often. This is because the Colortrac auto paper size detect function will add a small border to the original document. Extra margin data is scanned in this mode to prevent information being lost from the scan should the document be loaded slightly skewed. Crop Copy can be used to correct the effect of the extra autosize margin.

Crop Copy Configuration

| Default Settings for Crop copy (installed) | |
|--|-----|
| Crop copy (units) | Off |
| Left | 0 |
| Right | 0 |
| Top | 0 |
| Bottom | 0 |

| Typical Settings for Canon iPF820 inkjet printer | | |
|--|------------------------------|-----------------------------|
| | Setting for Fixed Paper Size | Setting for Auto Paper Size |
| Crop copy (mm) | On | On |
| Left | 4 | 6 |
| Right | 0 | 2 |
| Top | 6 | 8 |
| Bottom | 0 | 2 |



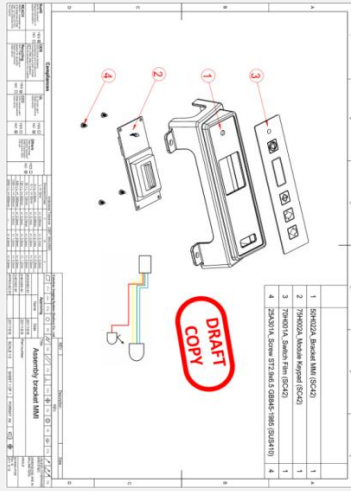
Crop copy in Action

Row A. The copied image moves off the edge of the paper. This is caused by the cumulative processes of printing, scanning and re-printing.

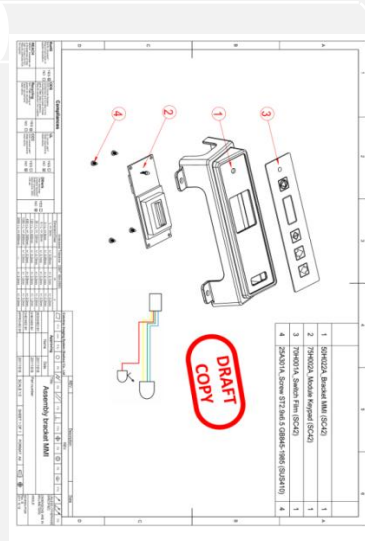
Row B. The image at the pre-copy print stage is trimmed to remove the yellow autosize boundary area and some of the white border added by the first print stage. The finished copy is offset by the copy printing process but remains complete and inside the physical paper boundary just like the printed original.

A. CROP COPY OFF (WITH AUTOSIZE)

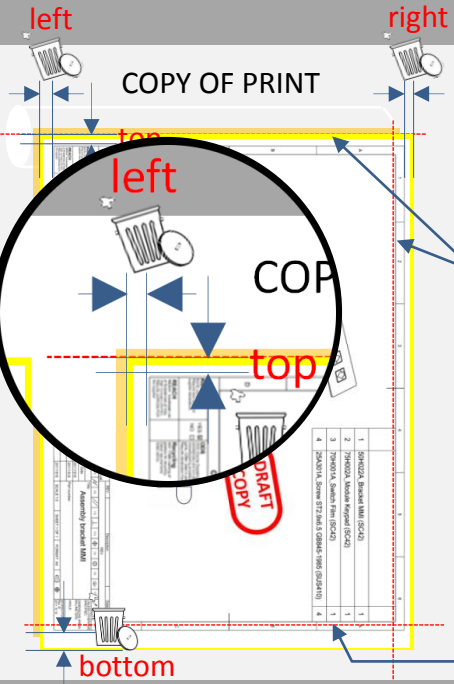
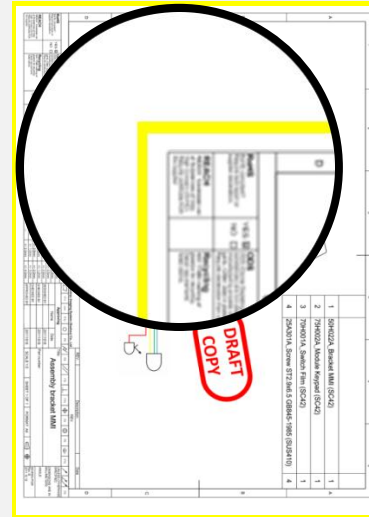
CAD ORIGINAL



PRINT OF ORIGINAL

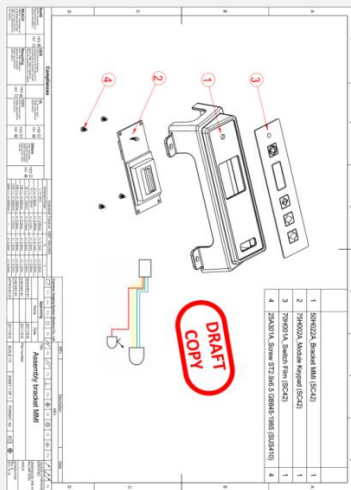


SCAN OF PRINT

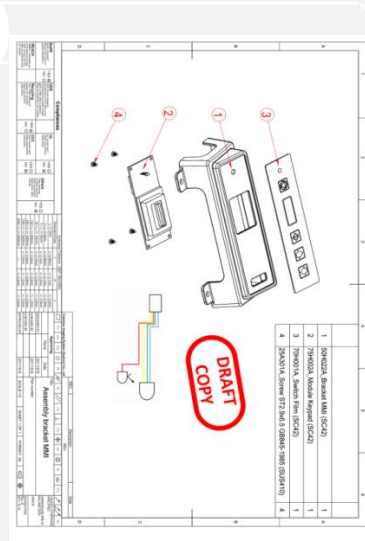


B. CROP COPY ON (WITH AUTOSIZE)

CAD ORIGINAL



PRINT OF ORIGINAL



SCAN OF PRINT

